

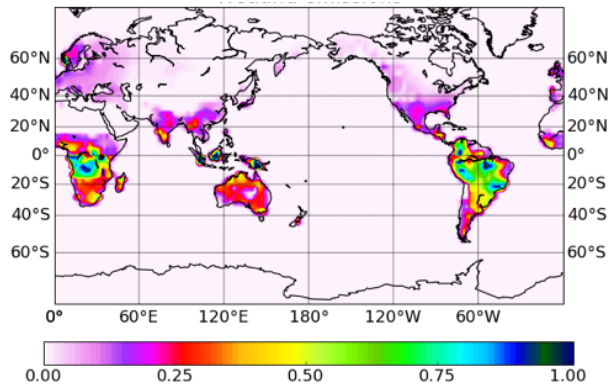
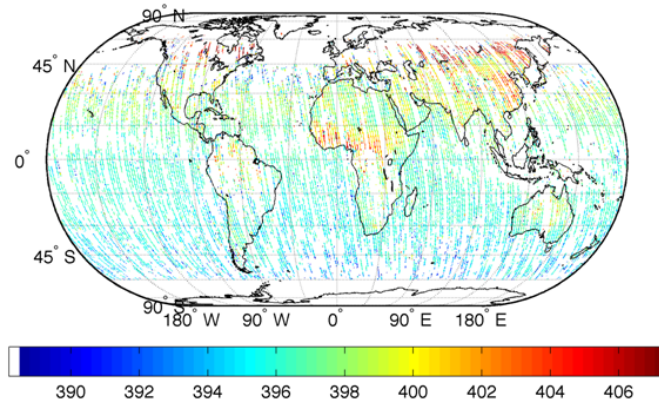
# Inference of greenhouse gas fluxes

*Matt Rigby, Atmospheric Chemistry Research Group*

*In situ* and remotely sensed concentration data

Spatially + temporally correlated errors + biases

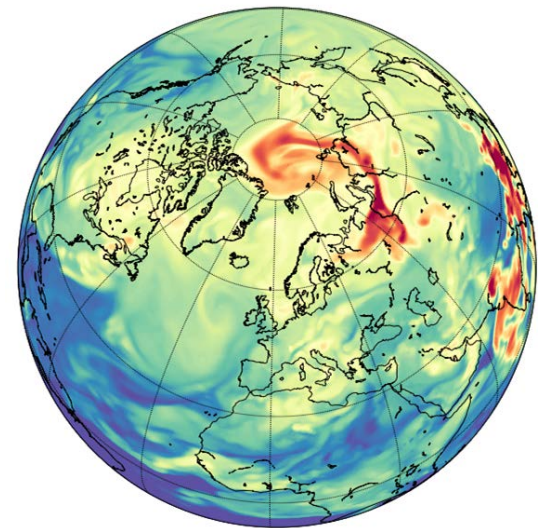
Storage + processing



Atmospheric model

Spatially + temporally correlated errors  
+ biases (parametric/systematic)

Parallelization, efficiency, storage



Hierarchical  
Bayesian  
methods

MCMC  
efficiency

Inferred fluxes